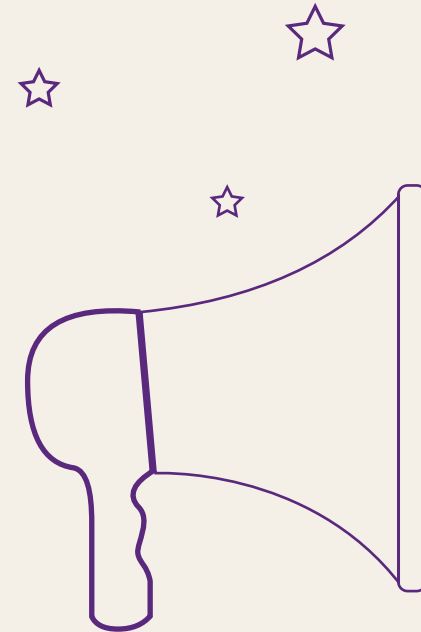




Bank of APIs



# Open Banking In-Scope Accounts

## Table of Contents

<b>1. Introduction</b> .....	<b>3</b>
1.1. Purpose of This Document .....	3
1.2. Brand Scope .....	3
<b>2. Scope of Accounts</b> .....	<b>3</b>

### **Versions Issued and Changes Made:**

v1.0 - 27<sup>th</sup> August 2019 - Issued to TPPs

v2.0 - 14<sup>th</sup> October 2019 - Additional Personal Savings Accounts added in

v3.0 – 17<sup>th</sup> December 2019 - NWI Accounts added in

v4.0 – 18<sup>th</sup> February 2020 – Currency Accounts and One Account Products added in

v5.0 – 8<sup>th</sup> April 2020 – New account types added in (Account type 26 for RBS and NW, and Account type UD for RBS, NW and UBN)

## 1. Introduction

### 1.1. Purpose of This Document

This document provides information to Open Banking Third Party Providers (TPPs) in response to their frequently asked questions on In-Scope Accounts. This document will be updated as appropriate due to regulatory or digital channel changes, and with additional brand information added in over time.

### 1.2. Brand Scope

This document currently relates to the following brands;

- The Royal Bank of Scotland - RBS
- NatWest - NW
- Ulster Bank (Northern Ireland) - UBN
- Ulster Bank (Republic of Ireland) - UBR
- NatWest International - NWI

## 2. Scope of Accounts

In line with PSD2, the following account types are in scope for Open Banking;

- Payment enabled Current Accounts, both Personal and Business
- Payment enabled Savings Accounts, both Personal and Business
- Payment enabled Current Account Mortgages
- Credit Cards and Charge Cards, both Personal and Business

Notes:

- Balance Transfers are not currently available via Online / Mobile / Open Banking.
- Joint Accounts are made available to TPPs when the account type is in scope and where the account owners are able to manage the account independently (i.e. not '2 to sign').
- To align with the functionality that is available to our customers on our digital channels Open Banking account information sharing is only available to customers aged 13 years old and over, and payment functionality is only available to customers aged 16 years old and over.
- Different payment types will be available to the different account types.
- Different account types are available within the different versions of the APIs. This is also detailed in the table.

## Open Banking: In-Scope Accounts

Brand	Product Description	Account Type	Account Subtype	Account Code	Version 2.0	Version 3.1
NW	CURRENT (GOLD PLUS)	Personal	Current Account	1	Yes	Yes
NW	TAILORED	Personal	Current Account	10	Yes	Yes
NW	STUDENT/GRADUATE	Personal	Current Account	17	Yes	Yes
NW	STAFF CURRENT	Personal	Current Account	60	Yes	Yes
NW	STEP	Personal	Current Account	77	Yes	Yes
NW	SELECT ACCOUNT+ODCONTROL	Personal	Current Account	MJ	Yes	Yes
NW	SWITCHED OUT ACCOUNT	Personal	Current Account	MY	Yes	Yes
NW	REWARD	Personal	Current Account	QA	Yes	Yes
NW	REWARD PRIVATE	Personal	Current Account	QB	Yes	Yes
NW	REWARD SILVER	Personal	Current Account	QC	Yes	Yes
NW	REWARD PLATINUM	Personal	Current Account	QD	Yes	Yes
NW	REWARD BLACK	Personal	Current Account	QE	Yes	Yes
NW	FOUNDATION	Personal	Current Account	QF	Yes	Yes
NW	CASH	Personal	Current Account	T4	Yes	Yes
NW	NATWEST ADAPT	Personal	Current Account	V1	Yes	Yes
NW	SELECT PLATINUM ACCOUNT	Personal	Current Account	WX	Yes	Yes
NW	SELECT PLATINUM ACCOUNT	Personal	Current Account	WY	Yes	Yes
NW	BASIC ACCOUNT	Personal	Current Account	ZG	Yes	Yes
NW	SELECT ACCOUNT	Personal	Current Account	ZH	Yes	Yes
NW	SELECT ACCOUNT	Personal	Current Account	ZJ	Yes	Yes
NW	SELECT ACCOUNT	Personal	Current Account	ZK	Yes	Yes
NW	SELECT SILVER ACCOUNT	Personal	Current Account	ZM	Yes	Yes
NW	SELECT SILVER ACCOUNT	Personal	Current Account	ZN	Yes	Yes
NW	BLACK ACCOUNT	Personal	Current Account	ZQ	Yes	Yes
NW	BUSINESS CURRENT	Business	Current Account	40	Yes	Yes
NW	CLIENT DEPOSIT SER(HY)	Business	Current Account	55	Yes	Yes
NW	CLIENT DEPOSIT SER(M)	Business	Current Account	58	Yes	Yes
NW	CLIENT DEPOSIT SER(Q)	Business	Current Account	86	Yes	Yes
NW	SWITCHING OUT ACCOUNT	Business	Current Account	MZ	Yes	Yes

## Open Banking: In-Scope Accounts

NW	FOUNDATION	Business	Current Account	V6	Yes	Yes
NW	CLIENT DEPOSIT MANAGER	Business	Current Account	W3	Yes	Yes
NW	BUSINESS RESERVE ACCOUNT	Business	Savings	42		Yes
NW	SPECIAL INT BEARING	Business	Savings	85		Yes
NW	CORP CASH MANAGER PLUS	Business	Savings	S8		Yes
NW	CORP CASH MANAGER PLUS	Business	Savings	WB		Yes
NW	CORP CASH MANAGER PLUS	Business	Savings	WC		Yes
NW	CORP CASH MANAGER PLUS	Business	Savings	WD		Yes
NW	CORP CASH MANAGER PLUS	Business	Savings	WE		Yes
NW	CORP CASH MANAGER PLUS	Business	Savings	WF		Yes
NW	CORP CASH MANAGER PLUS	Business	Savings	WG		Yes
NW	CORP CASH MANAGER PLUS	Business	Savings	WH		Yes
NW	CORP CASH MANAGER PLUS	Business	Savings	WJ		Yes
NW	CORP CASH MANAGER PLUS	Business	Savings	WK		Yes
NW	CORP CASH MANAGER PLUS	Business	Savings	WL		Yes
NW	CORP CASH MANAGER PLUS	Business	Savings	WM		Yes
NW	CORP CASH MANAGER PLUS	Business	Savings	WN		Yes
NW	CORP CASH MANAGER PLUS	Business	Savings	WP		Yes
NW	CORP CASH MANAGER PLUS	Business	Savings	WQ		Yes
NW	CORP CASH MANAGER PLUS	Business	Savings	WR		Yes
NW	CORP CASH MANAGER PLUS	Business	Savings	WS		Yes
NW	CORP CASH MANAGER PLUS	Business	Savings	WT		Yes
NW	CORP CASH MANAGER PLUS	Business	Savings	WU		Yes
NW	CORP CASH MANAGER PLUS	Business	Savings	WV		Yes
NW	CORP CASH MANAGER PLUS	Business	Savings	WW		Yes
NW	PRIMARY SAVINGS	Personal	Savings	S7		Yes
NW	NATWEST FIRST RESERVE	Personal	Savings	39		Yes
NW	CURRENCY ACCOUNT	Business	Current Account	IN		Yes
NW	SELECT ACCOUNT	Personal	Current Account	26		Yes
NW	GRADUATE ACCOUNT	Personal	Current Account	UD		Yes
RBS	INSTANT ACCESS SAVINGS	Personal	Current Account	11	Yes	Yes

## Open Banking: In-Scope Accounts

RBS	RBS CAM	Personal	Current Account Mortgage	80	Yes	Yes
RBS	GOLD CHEQUE	Personal	Current Account	1	Yes	Yes
RBS	SELECT	Personal	Current Account	8	Yes	Yes
RBS	CHILD & CO CURRENT	Personal	Current Account	9	Yes	Yes
RBS	PERSONAL CURRENT	Personal	Current Account	10	Yes	Yes
RBS	STUDENT CURRENT	Personal	Current Account	17	Yes	Yes
RBS	STAFF CURRENT	Personal	Current Account	60	Yes	Yes
RBS	PRIVATE BANKING CURRENT	Personal	Current Account	72	Yes	Yes
RBS	KEY	Personal	Current Account	77	Yes	Yes
RBS	SELECT ACCOUNT (OVERDRAFT CONTROL)	Personal	Current Account	MJ	Yes	Yes
RBS	PRIVATE BANK ACCOUNT	Personal	Current Account	P2	Yes	Yes
RBS	REWARD ACCOUNT	Personal	Current Account	QA	Yes	Yes
RBS	REWARD PRIVATE	Personal	Current Account	QB	Yes	Yes
RBS	REWARD SILVER	Personal	Current Account	QC	Yes	Yes
RBS	REWARD PLATINUM	Personal	Current Account	QD	Yes	Yes
RBS	REWARD BLACK	Personal	Current Account	QE	Yes	Yes
RBS	FOUNDATION	Personal	Current Account	QF	Yes	Yes
RBS	REVOLVE	Personal	Current Account	V1	Yes	Yes
RBS	SELECT PLATINUM	Personal	Current Account	WX	Yes	Yes
RBS	SELECT PLATINUM (PRIVATE)	Personal	Current Account	WY	Yes	Yes
RBS	BASIC	Personal	Current Account	ZG	Yes	Yes
RBS	SELECT (CREDIT RESTRICTED)	Personal	Current Account	ZH	Yes	Yes
RBS	SELECT	Personal	Current Account	ZJ	Yes	Yes
RBS	SELECT (PRIVATE)	Personal	Current Account	ZK	Yes	Yes
RBS	SELECT SILVER (CREDIT RESTRICTED)	Personal	Current Account	ZM	Yes	Yes
RBS	SELECT SILVER	Personal	Current Account	ZN	Yes	Yes
RBS	BLACK	Personal	Current Account	ZQ	Yes	Yes
RBS	CASHLINE ACCOUNT	Personal	Savings	35		Yes
RBS	BUSINESS CURRENT	Business	Current Account	40	Yes	Yes

## Open Banking: In-Scope Accounts

RBS	TREASURERS	Business	Current Account	45	Yes	Yes
RBS	CLIENT DEPOSIT SER(HY)	Business	Current Account	55	Yes	Yes
RBS	CLIENT DEPOSIT SER(M)	Business	Current Account	58	Yes	Yes
RBS	SPECIAL INT BEARING	Business	Current Account	85	Yes	Yes
RBS	CLIENT DEPOSIT SER(Q)	Business	Current Account	86	Yes	Yes
RBS	SWITCHING OUT ACCOUNT	Business	Current Account	MZ	Yes	Yes
RBS	CORP CASH MANAGER PLUS	Business	Current Account	S8	Yes	Yes
RBS	FOUNDATION	Business	Current Account	V6	Yes	Yes
RBS	CLIENT DEPOSIT MANAGER	Business	Current Account	W3	Yes	Yes
RBS	CORP CASH MANAGER PLUS	Business	Current Account	WB	Yes	Yes
RBS	CORP CASH MANAGER PLUS	Business	Current Account	WC	Yes	Yes
RBS	CORP CASH MANAGER PLUS	Business	Current Account	WD	Yes	Yes
RBS	CORP CASH MANAGER PLUS	Business	Current Account	WE	Yes	Yes
RBS	CORP CASH MANAGER PLUS	Business	Current Account	WF	Yes	Yes
RBS	CORP CASH MANAGER PLUS	Business	Current Account	WP	Yes	Yes
RBS	CORP CASH MANAGER PLUS	Business	Current Account	WQ	Yes	Yes
RBS	CORP CASH MANAGER PLUS	Business	Current Account	WR	Yes	Yes
RBS	CORP CASH MANAGER PLUS	Business	Current Account	WU	Yes	Yes
RBS	BUSINESS RESERVE ACCOUNT	Business	Savings	42		Yes
RBS	SAVINGS	Personal	Savings	32		Yes
RBS	RAINBOW SAVINGS	Personal	Savings	33		Yes
RBS	PRIMARY SAVINGS	Personal	Savings	S7		Yes
RBS	CURRENCY ACCOUNT	Business	Current Account	IN		Yes
RBS	ONE ACCOUNT / NW ONE / VIRGIN ONE	Personal	Current Account	78		Yes
RBS	SELECT ACCOUNT	Personal	Current Account	26		Yes
RBS	GRADUATE ACCOUNT	Personal	Current Account	UD		Yes
UBN	DUAL	Personal	Current Account	1	Yes	Yes
UBN	U FIRST GOLD	Personal	Current Account	7	Yes	Yes
UBN	CURRENT PLUS	Personal	Current Account	8	Yes	Yes
UBN	CURRENT	Personal	Current Account	10	Yes	Yes

## Open Banking: In-Scope Accounts

UBN	STUDENT	Personal	Current Account	17	Yes	Yes
UBN	STAFF	Personal	Current Account	60	Yes	Yes
UBN	STEP	Personal	Current Account	77	Yes	Yes
UBN	UFIRST PRIVATE	Personal	Current Account	P1	Yes	Yes
UBN	PRIVATE CURRENT ACCOUNT	Personal	Current Account	P2	Yes	Yes
UBN	CURRENT SELECT	Personal	Current Account	Q1	Yes	Yes
UBN	FOUNDATION	Personal	Current Account	QF	Yes	Yes
UBN	CASH	Personal	Current Account	T4	Yes	Yes
UBN	ADAPT	Personal	Current Account	V1	Yes	Yes
UBN	BUSINESS CURRENT	Business	Current Account	40	Yes	Yes
UBN	SOLICITORS RESERVE	Business	Current Account	45	Yes	Yes
UBN	SWITCHING OUT ACCOUNT	Business	Current Account	MZ	Yes	Yes
UBN	BUSINESS RESERVE ACCOUNT	Business	Savings	42		Yes
UBN	SPECIAL INT BEARING	Business	Savings	85		Yes
UBN	LIQUIDITY SELECT	Business	Savings	N7		Yes
UBN	E-SAVINGS	Personal	Savings	38		Yes
UBN	E-SAVINGS PLUS	Personal	Savings	T3		Yes
UBN	SPECIAL INTEREST DEPOSIT	Personal	Savings	U0		Yes
UBN	PATHWAY ACCOUNT	Personal	Savings	U1		Yes
UBN	BONUS SAVER ACCOUNT	Personal	Savings	U3		Yes
UBN	DIRECT SAVER	Personal	Savings	X4		Yes
UBN	LOYALTY SAVER	Personal	Savings	X6		Yes
UBN	CURRENCY ACCOUNT	Business	Current Account	IN		Yes
UBN	GRADUATE ACCOUNT	Personal	Current Account	UD		Yes
UBR	DUAL	Personal	Current Account	1		Yes
UBR	U FIRST GOLD	Personal	Current Account	7		Yes
UBR	CURRENT PLUS	Personal	Current Account	8		Yes
UBR	CURRENT NEGOTIATED	Personal	Current Account	10		Yes
UBR	STUDENT	Personal	Current Account	17		Yes
UBR	UFIRST	Personal	Current Account	26		Yes
UBR	STAFF	Personal	Current Account	60		Yes



## Open Banking: In-Scope Accounts

UBR	STEP	Personal	Current Account	77	Yes
UBR	UFIRST PRIVATE	Personal	Current Account	P1	Yes
UBR	PRIVATE CURRENT ACCOUNT	Personal	Current Account	P2	Yes
UBR	CURRENT	Personal	Current Account	Q1	Yes
UBR	FOUNDATION ACCOUNT	Personal	Current Account	QF	Yes
UBR	FACILITY	Personal	Current Account	T5	Yes
UBR	ADAPT	Personal	Current Account	V1	Yes
UBR	SERVICE ACCOUNT	Personal	Current Account	Z9	Yes
UBR	STANDARD ACCOUNT	Personal	Current Account	ZG	Yes
UBR	UR FIRST	Personal	Savings	36	Yes
UBR	EASY ACCESS SAVINGS	Personal	Savings	39	Yes
UBR	UR MONEY	Personal	Savings	75	Yes
UBR	REWARD RESERVE	Personal	Savings	Q3	Yes
UBR	PRIVATE RESERVE	Personal	Savings	T1	Yes
UBR	INSTANT ACCESS PLUS	Personal	Savings	T9	Yes
UBR	SPECIAL INTEREST DEPOSIT	Personal	Savings	U0	Yes
UBR	PATHWAY ACCOUNT	Personal	Savings	U1	Yes
UBR	BONUS SAVER ACCOUNT	Personal	Savings	U3	Yes
UBR	ECB RATE LINKED DEPOSIT	Personal	Savings	U5	Yes
UBR	ACCESS PLUS ACCOUNT	Personal	Savings	W4	Yes
UBR	LOYALTY SAVER	Personal	Savings	X6	Yes
UBR	uFirst Platinum	Personal	Current Account	WX	Yes
UBR	SELECT ACCOUNT	Personal	Current Account	ZJ	Yes
UBR	uFirst Silver	Personal	Current Account	ZN	Yes
UBR	Home Saver	Personal	Savings	UA	Yes
UBR	BUSINESS CURRENT	Business	Current Account	40	Yes
UBR	SOLICITORS RESERVE	Business	Current Account	45	Yes
UBR	BUSINESS SERVICE ACCOUNT	Business	Current Account	JC	Yes
UBR	CORPORATE ACCOUNT	Business	Current Account	Q9	Yes
UBR	ROYALTIES PREMIER	Business	Current Account	Q8	Yes
UBR	CHILD & CO CURRENT	Business	Current Account	9	Yes

## Open Banking: In-Scope Accounts

UBR	CASH MANAGEMENT	Business	Current Account	14	Yes
UBR	LOAN RETURNED PERSONAL	Business	Current Account	15	Yes
UBR	LOAN RETURNED BUSINESS	Business	Current Account	16	Yes
UBR	REVOLVING BUDGET	Business	Current Account	27	Yes
UBR	INDIVIDUAL CLIENTS	Business	Current Account	31	Yes
UBR	NWDBB CURRENT	Business	Current Account	41	Yes
UBR	REVOLVING EQUITY RLSE	Business	Current Account	48	Yes
UBR	CLIENT DEPOSIT SER(HY)	Business	Current Account	55	Yes
UBR	CLIENT DEPOSIT SER(M)	Business	Current Account	58	Yes
UBR	STAFF BUDGET	Business	Current Account	62	Yes
UBR	PRIVATE BANKING CURRENT	Business	Current Account	72	Yes
UBR	SHORT TERM EXPORT FIN.	Business	Current Account	73	Yes
UBR	ECGD MEDIUM/LONG TERM	Business	Current Account	74	Yes
UBR	SHIPBUILDING	Business	Current Account	76	Yes
UBR	RB CAM	Business	Current Account	80	Yes
UBR	F.I. GENERAL CLIENTS	Business	Current Account	81	Yes
UBR	OVERSEAS VOSTRO	Business	Current Account	82	Yes
UBR	RELIEF & REAL INT BEAR	Business	Current Account	83	Yes
UBR	SOLICITORS RESERVE	Business	Current Account	86	Yes
UBR	RBIS INSURANCE BROKING	Business	Current Account	88	Yes
UBR	RBIS TRAVEL INSURANCE	Business	Current Account	89	Yes
UBR	BUSINESS RESERVE ACCOUNT	Business	Savings	42	Yes
UBR	30 Day Business Reserve	Business	Savings	43	Yes
UBR	Special Interest-Bearing Account (SIBA)	Business	Savings	85	Yes
UBR	LIQUIDITY SELECT	Business	Savings	N7	Yes
UBR	LIQUIDITY MANAGER	Business	Savings	N8	Yes
UBR	BONUS ACCESS	Business	Savings	S4	Yes
NWI	CURRENT (GOLD PLUS)	Personal	Current Account	1	Yes
NWI	DIAMOND RESERVE	Personal	Savings	3	Yes
NWI	CURRENT PLUS	Personal	Current Account	8	Yes
NWI	CURRENT	Personal	Current Account	10	Yes

## Open Banking: In-Scope Accounts

NWI	SPECIAL RESERVE	Personal	Current Account	11	Yes
NWI	STUDENT / GRADUATE	Personal	Current Account	17	Yes
NWI	FOUNDATIONS	Personal	Current Account	21	Yes
NWI	30 DAY BONUS RESERVE	Personal	Savings	34	Yes
NWI	YOUNG SAVER	Personal	Savings	36	Yes
NWI	FIRST RESERVE	Personal	Savings	39	Yes
NWI	BUSINESS CURRENT	Business	Current Account	40	Yes
NWI	BUSINESS RESERVE	Business	Savings	42	Yes
NWI	CORPORATE DIAMOND RESERVE	Business	Savings	43	Yes
NWI	SOLICITORS RESERVE	Business	Current Account	45	Yes
NWI	STAFF CURRENT	Personal	Current Account	60	Yes
NWI	CARD PLUS	Personal	Savings	75	Yes
NWI	BASIC ACCOUNT	Personal	Current Account	77	Yes
NWI	SPECIAL INT BEARING	Business	Savings	85	Yes
NWI	SWITCHED OUT	Personal	Current Account	MY	Yes
NWI	SWITCHED OUT	Business	Current Account	MZ	Yes
NWI	PRIVATE BANK	Personal	Current Account	P2	Yes
NWI	CURRENT ACCOUNT	Personal	Current Account	Q1	Yes
NWI	CAPITAL RESERVE	Business	Savings	Q2	Yes
NWI	REWARD RESERVE	Personal	Savings	Q3	Yes
NWI	PRIVATE BANKING	Personal	Savings	Q4	Yes
NWI	ADVANTAGE RESERVE	Personal	Savings	Q5	Yes
NWI	BONUS SAVER	Business	Savings	Q7	Yes
NWI	ADVANTAGE SAVER	Personal	Savings	T1	Yes
NWI	E-SAVINGS PLUS	Personal	Savings	T3	Yes
NWI	CASH	Personal	Current Account	T4	Yes
NWI	CLIENT DEP	Business	Current Account	W3	Yes
NWI	GOLD ACCOUNT	Personal	Current Account	WA	Yes
NWI	REGULAR SAVER	Personal	Savings	X3	Yes
NWI	INSTANT SAVER	Personal	Current Account	Z2	Yes
NWI	BASIC ACCOUNT	Personal	Current Account	ZG	Yes

## Open Banking: In-Scope Accounts

NWI	SELECT CREDIT RESTRICTED	Personal	Current Account	ZH	Yes
NWI	SELECT ACCOUNT	Personal	Current Account	ZJ	Yes
NWI	SELECT ACCOUNT	Personal	Current Account	ZM	Yes
NWI	SELECT SILVER ACCOUNT	Personal	Current Account	ZN	Yes
NWI	BLACK ACCOUNT	Personal	Current Account	ZQ	Yes

### Personal Cards

Brand	Product Description	Account Type	Account Subtype	Account Code	Version 2.0	Version 3.1
NW	Reward Credit Card	Personal	Credit Card	AMA		Yes
NW	NW Reward Black	Personal	Credit Card	NAM		Yes
NW	NW Student	Personal	Credit Card	NMA		Yes
NW	Clear Rete Platinum Credit Card	Personal	Credit Card	NMP		Yes
NW	NW Credit Card	Personal	Credit Card	NWC		Yes
NW	NW Adv Premier Visa Credit	Personal	Credit Card	NAP		Yes
NW	NW Legacy Black	Personal	Credit Card	NBC		Yes
NW	NW Advantage Dual Gold	Personal	Credit Card	NDA		Yes
NW	NW Dual Gold and flat rate	Personal	Credit Card	NDG		Yes
NW	NW Dual Classic	Personal	Credit Card	NDM		Yes
NW	NW Mastercard Classic	Personal	Credit Card	NMA		Yes
NW	NW Adv Premier Gold Charge and Signa Charge Card	Personal	Charge Card	NPR		Yes
NW	NW Advantage Private Card	Personal	Credit Card	NSC		Yes
NW	NW Advantage Visa Gold	Personal	Credit Card	NVA		Yes
NW	NW Visa Classic	Personal	Credit Card	NVC		Yes
NW	NW Visa Gold	Personal	Credit Card	NVG		Yes
NW	NW Visa Primary	Personal	Credit Card	NVP		Yes
RBS	RBS Reward Black	Personal	Credit Card	RAM		Yes
RBS	Clear Rate Platinum Credit Card	Personal	Credit Card	RMP		Yes
RBS	RBS Student	Personal	Credit Card	RMS		Yes

## Open Banking: In-Scope Accounts

RBS	Royal Bank Credit Card	Personal	Credit Card	RWC	Yes
RBS	Reward Credit Card	Personal	Credit Card	RWM	Yes
RBS	RBS Legacy Black	Personal	Credit Card	RBC	Yes
RBS	RBS Visa Gold Staircase	Personal	Credit Card	RGS	Yes
RBS	RBS Mastercard Classic Legacy	Personal	Credit Card	RMC	Yes
RBS	RBS Mastercard Classic Staircase	Personal	Credit Card	RMS	Yes
RBS	RBS Royalties Private Card	Personal	Credit Card	RSC	Yes
RBS	RBS Mastercard Gold Staircase and flat rate	Personal	Credit Card	RSG	Yes
RBS	RBS Visa Classic Legacy	Personal	Credit Card	RVC	Yes
RBS	RBS Visa Fee Gold Legacy	Personal	Credit Card	RVG	Yes
RBS	RVP - RBS Visa Platinum	Personal	Credit Card	RVP	Yes
RBS	RVS - RBS Visa Classic Staircase	Personal	Credit Card	RVS	Yes
UBN	Ulster Bank Student	Personal	Credit Card	UMA	Yes
UBN	Ulster Bank Credit Card	Personal	Credit Card	UMG	Yes
UBN	UVI - Ulster Visa Classic	Personal	Credit Card	UVI	Yes
UBN	UWN - ULSTER WORLD STERLING and Black by CMID	Personal	Credit Card	UWN	Yes
UBR	GOLD M/CARD	Personal	Credit Card	M1FAE	Yes
UBR	CLA M/CARD	Personal	Credit Card	M1UEM	Yes
UBR	UBRWORLD MC	Personal	Credit Card	M2UWR	Yes
UBR	CLASS VISA	Personal	Credit Card	V1UEV	Yes
UBR	ZINC	Personal	Credit Card	NA	Yes
UBR	STUDENT	Personal	Credit Card	NA	Yes
UBR	BLACK	Personal	Credit Card	NA	Yes

### Commercial Cards

Brand	Product Description	Account Type	Account Subtype	Account Code	Version 2.0	Version 3.1
NW	NatWest - Business Credit	Business	Credit Card	PMP0000497		Yes
NW	NatWest - Business Plus	Business	Credit Card	PMP0002516		Yes
NW	NatWest - Business One	Business	Charge Card	PMP0000368		Yes
NW	NatWest - Business Charge	Business	Charge Card	PMP0000361		Yes
NW	NatWest Business Visa Credit Card	Business	Credit Card	PMP0001334		Yes
NW	NW Visa Company	Business	Charge Card	PMP0000396		Yes
NW	NW Visa Corporate	Business	Charge Card	PMP0000314		Yes
NW	Mastercard Approval 2 Buy	Business	Charge Card	PMP0000228		Yes
NW	Mastercard Lodge account	Business	Charge Card	PMP0000300		Yes
NW	Visa Lodge Account	Business	Charge Card	PMP0000251		Yes
NW	NW Visa Purchasing	Business	Charge Card	PMP0000317		Yes
NW	Natwest - onecard	Business	Charge Card	PMP0000319		Yes
NW	Visa Euro Corporate Card	Business	Charge Card	PMP0000302		Yes
RBS	RBS - Business Credit	Business	Credit Card	PMP0000497		Yes
RBS	RBS - Business Plus	Business	Credit Card	PMP0002516		Yes
RBS	RBS - onecard	Business	Charge Card	PMP0000319		Yes
RBS	RBS - Business One	Business	Charge Card	PMP0000368		Yes
RBS	RBS - Business Charge	Business	Charge Card	PMP0000361		Yes
RBS	RBS Business Visa Credit Card	Business	Credit Card	PMP0001334		Yes
RBS	RBS Visa Business Card	Business	Charge Card	PMP0000404		Yes
RBS	RBS Visa Corporate	Business	Charge Card	PMP0000314		Yes
RBS	Mastercard Approval 2 Buy	Business	Charge Card	PMP0000228		Yes
RBS	Mastercard Lodge account	Business	Charge Card	PMP0000300		Yes
RBS	Visa Lodge Account	Business	Charge Card	PMP0000251		Yes
RBS	RBS Visa Purchasing	Business	Charge Card	PMP0000317		Yes
UBN	Ulster Bank NI - OneCard	Business	Charge Card	PMP0000514		Yes
UBR	Ulster Bank ROI - OneCard	Business	Charge Card	PMP0000032		Yes

## Open Banking: In-Scope Accounts

---

UBR	Ulster Bank ROI - Business Card	Business	Charge Card	PMP0000109	Yes
UBR	Ulster Bank ROI - Purchasing Card	Business	Charge Card	PMP0000033	Yes
UBR	Ulster Bank ROI - Lodge	Business	Charge Card	PMP0000813	Yes